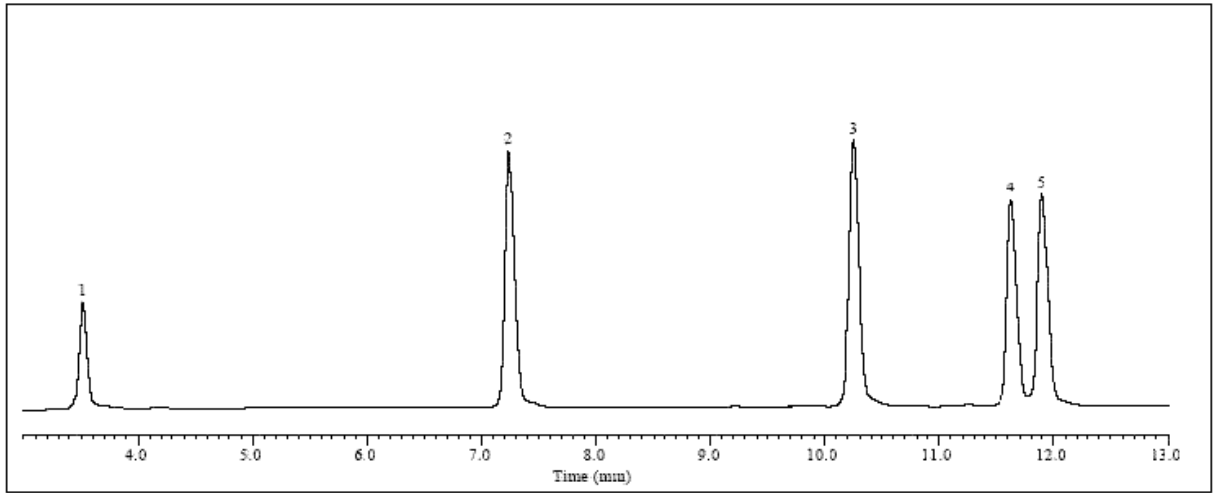


Zodiac C8(1) 液相色谱柱分离多肽类

Technique : HPLC
Column : Zodiac 5 μ C8(1), 150 x 4.6mm
Temperature : Ambient
Eluent : A: 0.1% TFA in water
 B: 0.1% TFA in MeCN
Gradient : 10 – 40% B in 15 min.
Flow rate : 1.0 ml/min
Detection : UV @ 220 nm

Samples : 1. Gly-Tyr
 2. Val-Tyr-Val
 3. Methionin-Enkephalin
 4. Angiotensin II
 5. Leucine Enkephalin



化合物名称: Gly-Tyr、Val-Tyr-Val、甲硫氨酸脑啡肽、血管紧张素 II、亮氨酸脑啡肽